

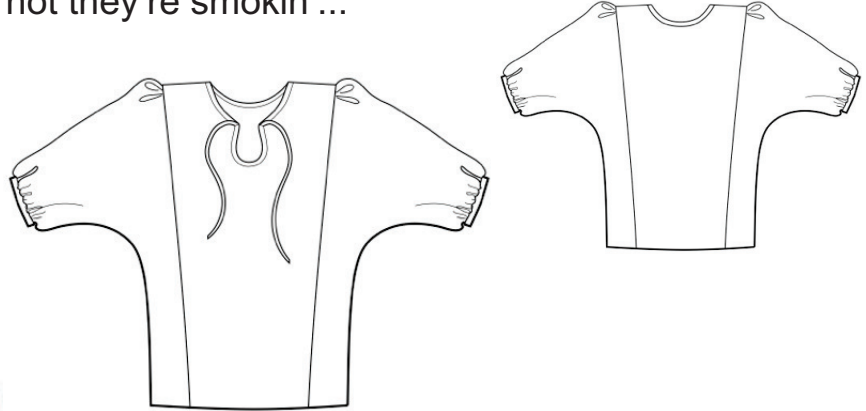
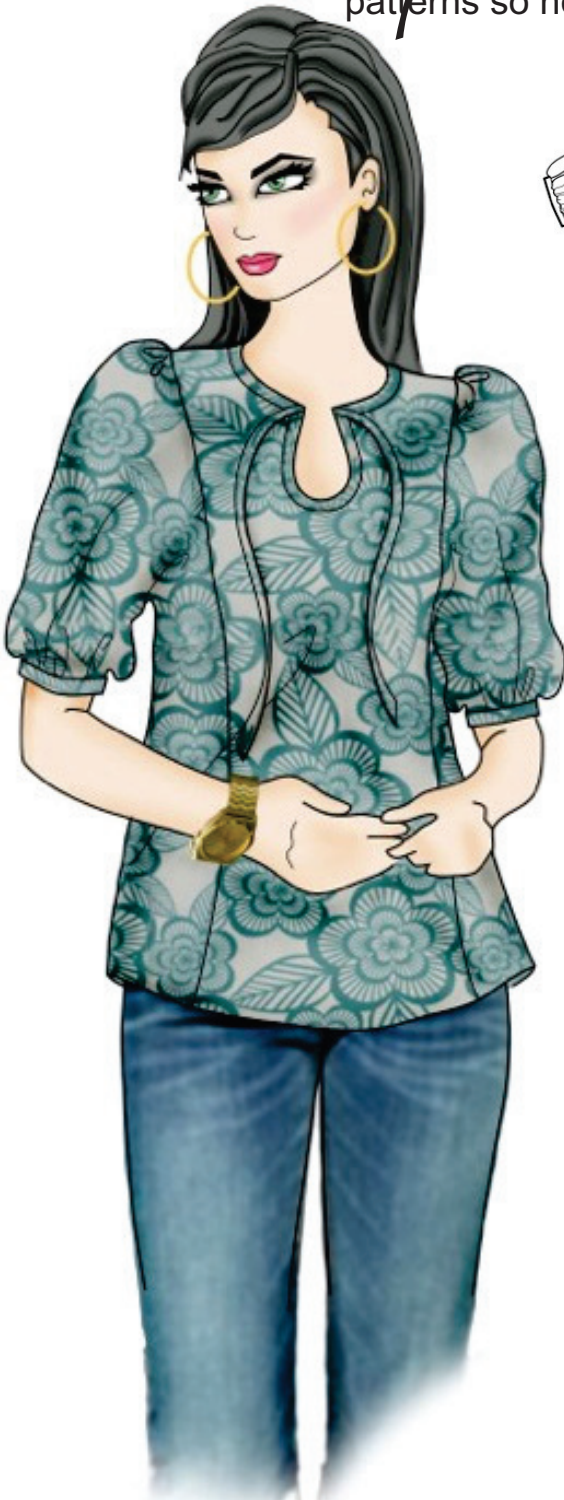
SKILL LEVEL



ADVANCED
BEGINNER

multisized
pattern...sizes
6/8/10/12/14/16
/18/20/22/24/26
all together!

*www.hotpatterns.com*tm
patterns so hot they're smokin'...



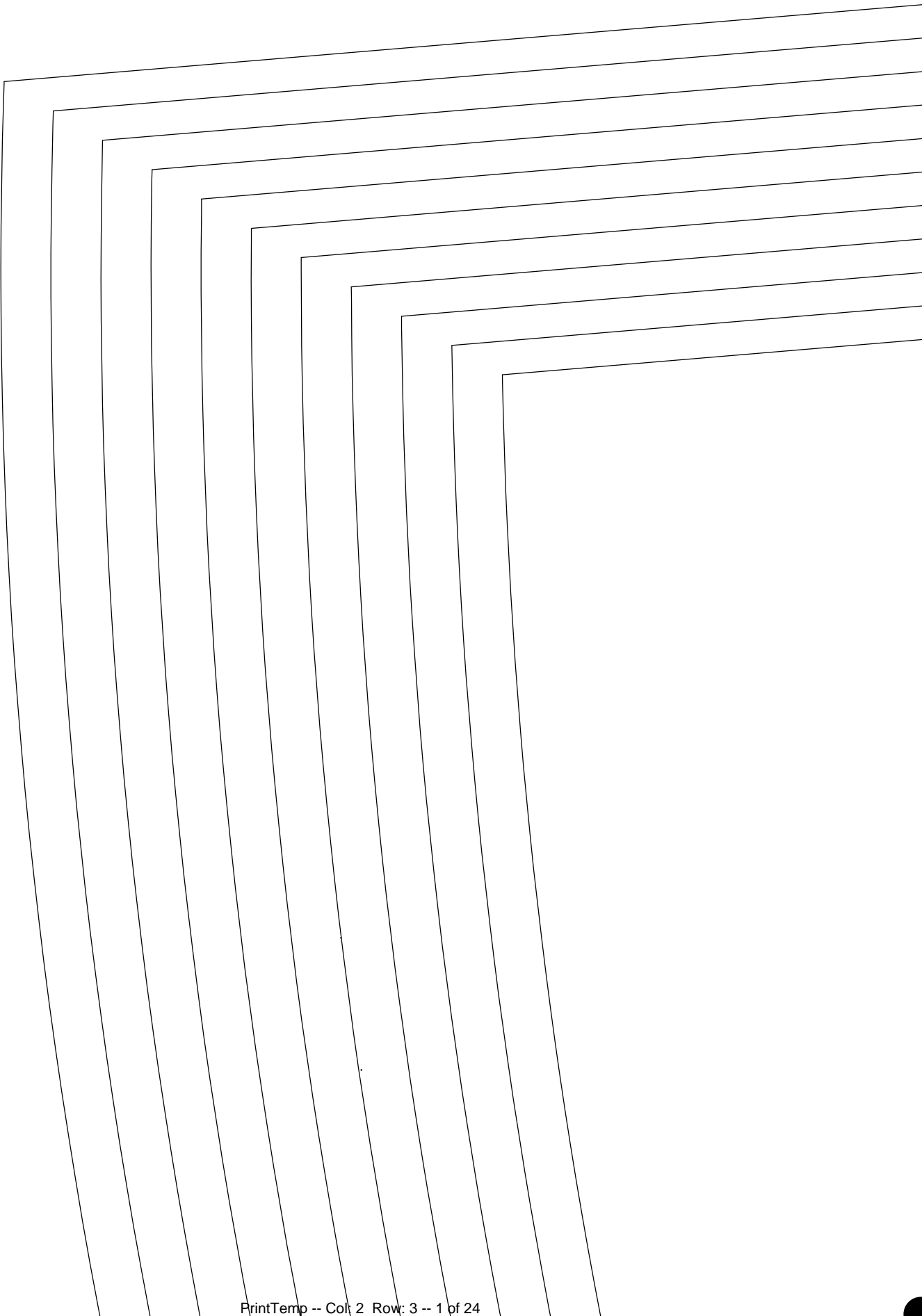
HotPatterns & fabric.com exclusive download
Gypsophelia Peasant Top

Sometimes, you just want to make a simple but pretty top to add to your closet, something that works in prints or solids, knits or wovens...so try this! This super-cute top is designed for lightweight woven fabrics like voile, lawn or rayon challis, but it's also gorgeous in lightweight drape-y knits like rayon, modal or bamboo.

Pull-over, semi-fitted Peasant Top has shoulder-princess seams and side panels with cut-on dolman sleeves, gently gathered at the shoulder. Top features above-elbow-length sleeves gathered into self-bound cuffs, and a bound key-hole shaped front neckline with self-fabric ties.

The top finishes at the mid hip. Wear this super-pretty top tucked into a matching or toning tiered skirt for a romantic weekend or vacation outfit, or try it to add a feminine touch to your favorite jeans, or to soften a tailored blazer.

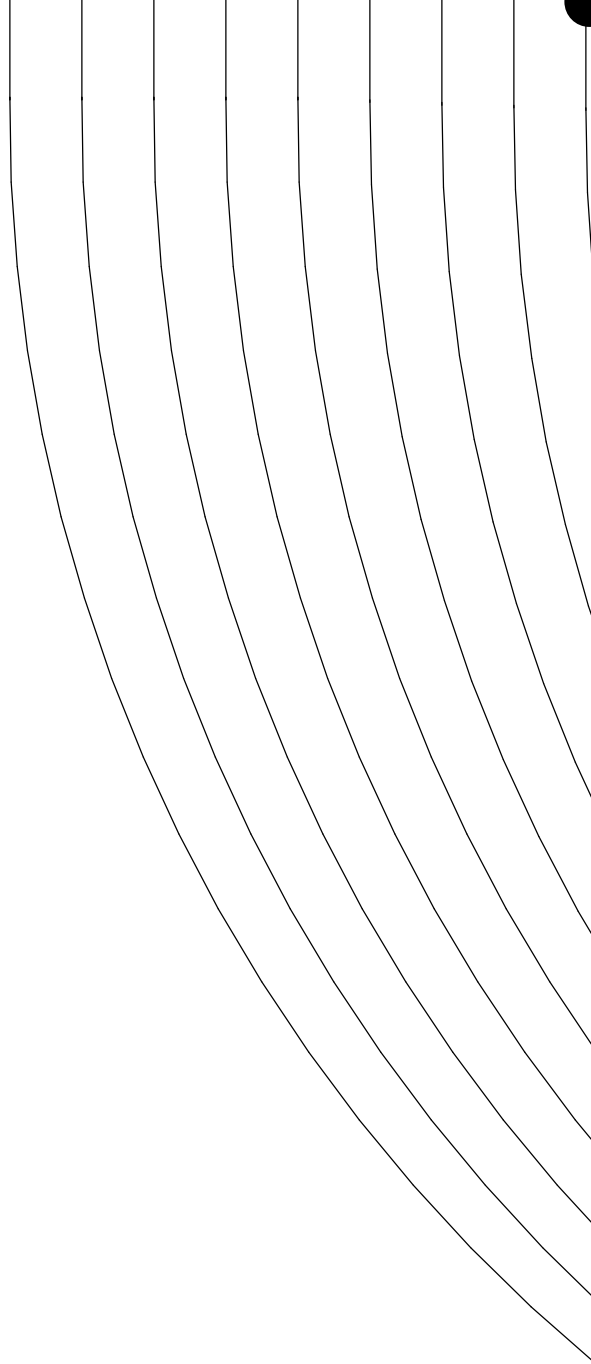
3



SIZE 26	
SIZE 24	
SIZE 22	
SIZE 20	
SIZE 18	
SIZE 16	
SIZE 14	
SIZE 12	
SIZE 10	
SIZE 8	
SIZE 6	

SIZE 20
 SIZE 18
 SIZE 16
 SIZE 14
 SIZE 12
 SIZE 10
 SIZE 8
 SIZE 6

13

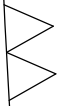


fabric.com

free download exclusively for

Hot Patterns

gypsophilia peasant top
side back
cut 1 pair in fabric



- SIZE 26
- SIZE 24
- SIZE 22
- SIZE 20
- SIZE 18
- SIZE 16
- SIZE 14
- SIZE 12
- SIZE 10
- SIZE 8
- SIZE 6

18

1

2

3

4

5

67

8

10

112

9

17

13

14

15

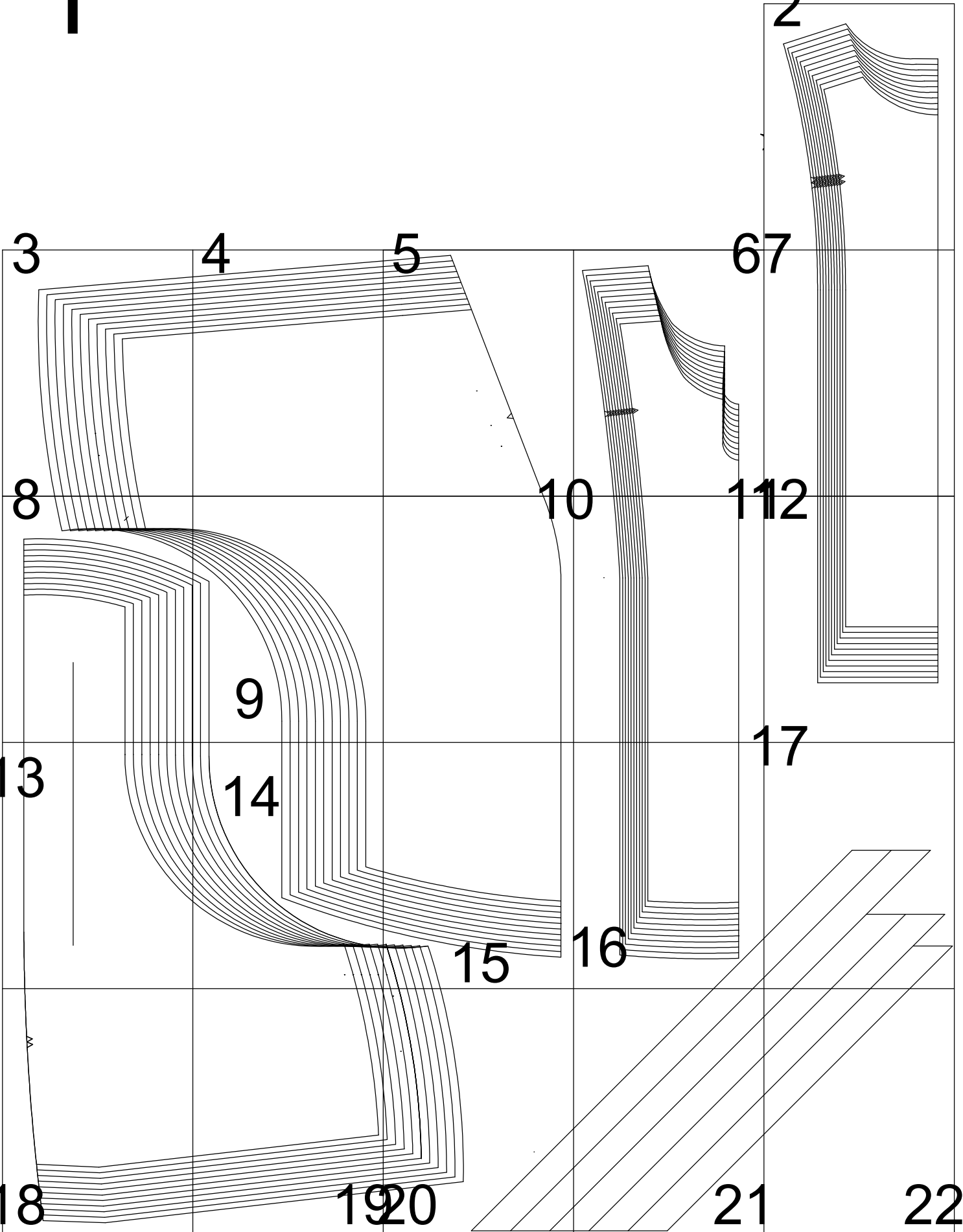
16

18

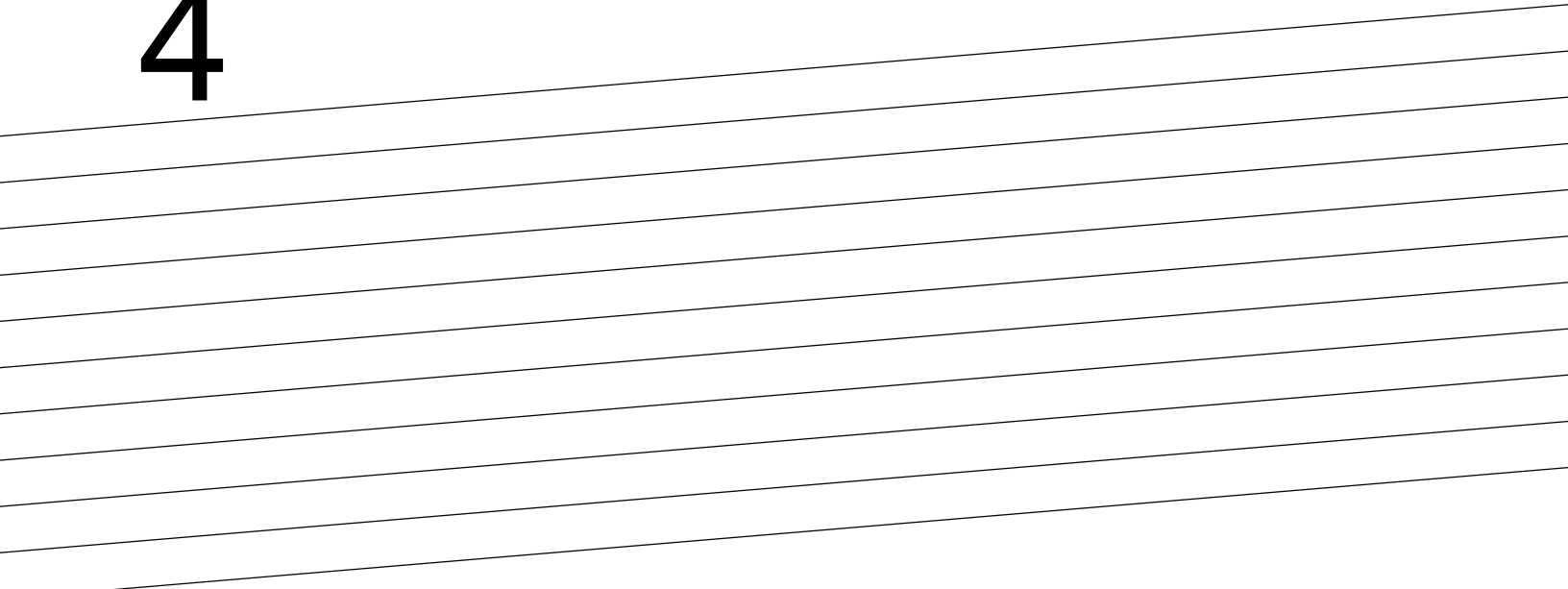
1920

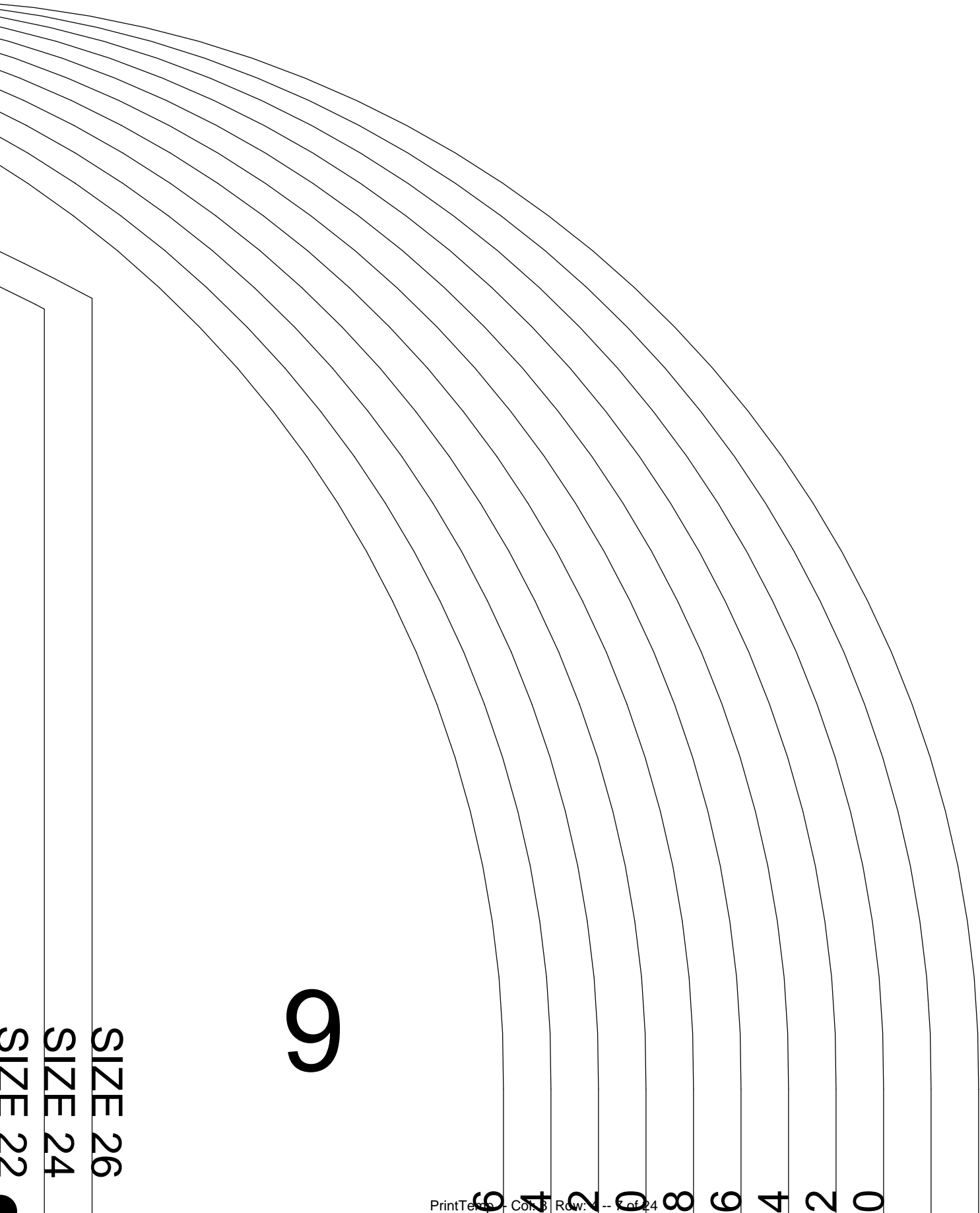
21

22



4





9

SIZE 26

SIZE 24

SIZE 22

14

SIZE 2

SIZE 2

SIZE 2

SIZE 2

SIZE 1

SIZE 1

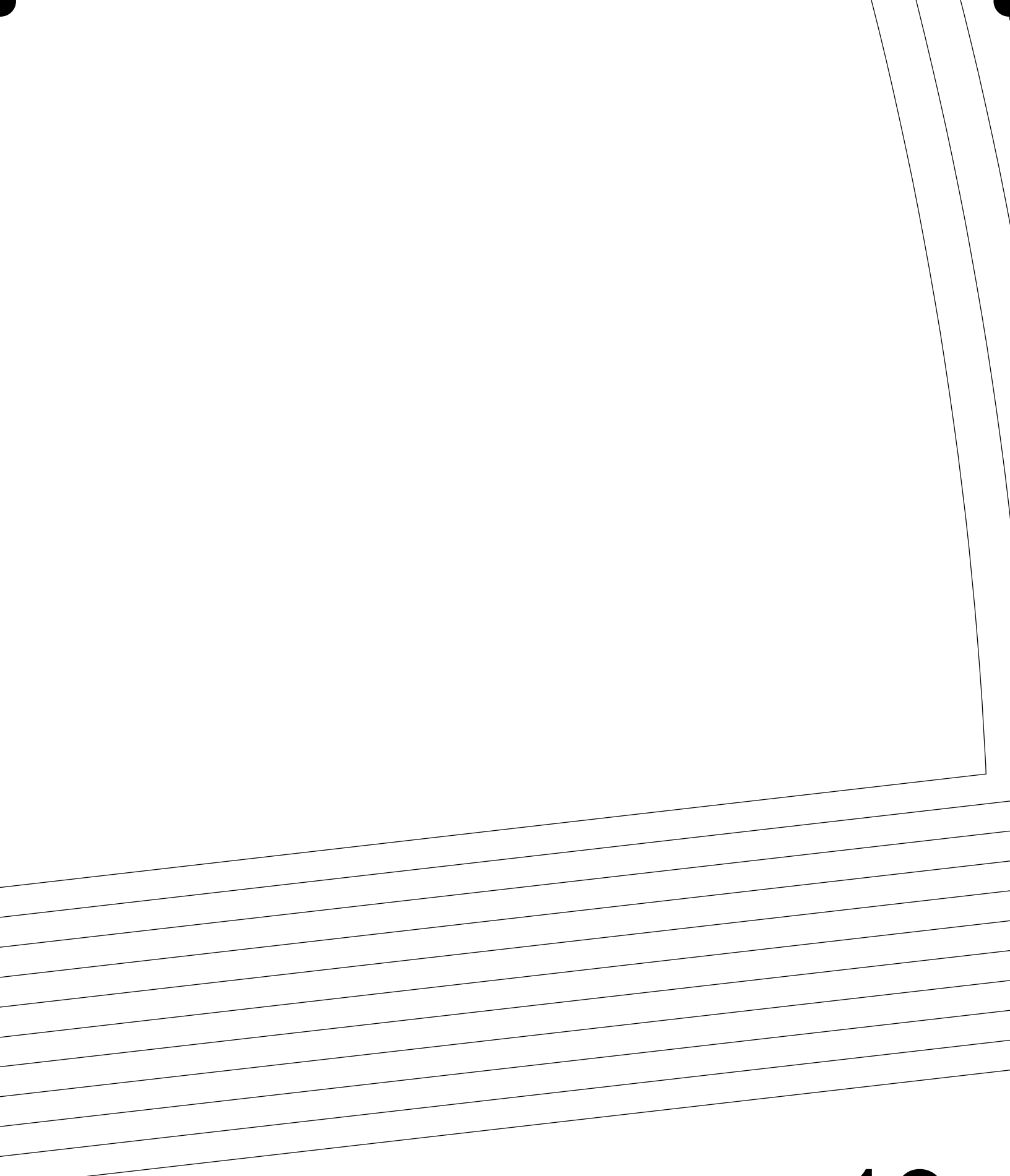
SIZE 1

SIZE 1

SIZE 1

SIZE 8

SIZE 6



Hot Patterns & fabric.com

exclusive free download gypsophelia peasant top instructions page 1 of 2

SEAM ALLOWANCES & OTHER INFO

Seam allowances are 3/8" or 1cm wide;
all seams are sewn right sides together
unless otherwise stated.

The neckline and cuffs of the top are finished with
self fabric or purchased bias binding; the front
neckline binding becomes the front neck tie.
The hem of the top is finished with a narrow hem.

Skills needed include: making & applying bias binding;
gathering fabric; working a narrow hem.

ABOUT THIS STYLE

This top is a semi-fitted, pull-over style
with a relaxed fit and a lean silhouette.

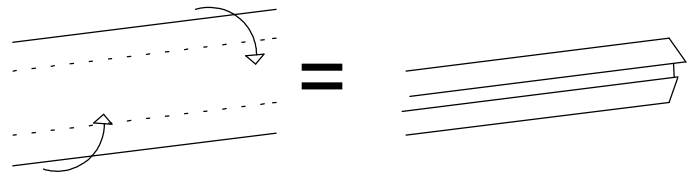
As always, make & fit a muslin before you cut
into your fabric, using a muslin or test fabric
with a similar drape to your chosen fabric.

FABRIC & NOTIONS REQUIRED

All sizes need around 2 yards/ 180 cm of 60"/150cm
wide fabric for this top. If you want to use purchased bias
binding, you'll need about 3 yards/270 cm of
1/2" or 1.25 cm wide purchased bias binding.

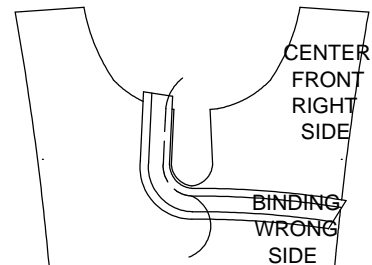
1a

Start by preparing the bias binding...EITHER
pull the bias strips through a binding folder, pressing
as you go, or press each edge to the center of the strip.



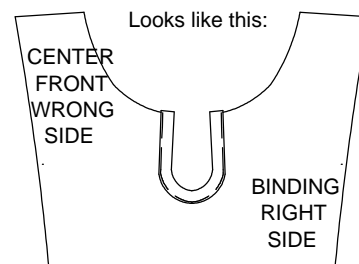
Bind the front keyhole...use the shortest of the binding strips.
Right sides together, sew the binding to the keyhole along
the press line of the binding. Looks like this:

1b

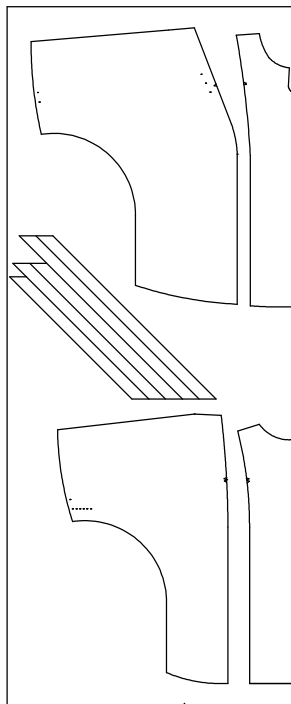


Flip the binding to the wrong side of the center front,
and edge stitch it down. Press flat.

1c



SUGGESTED CUTTING LAYOUT FOR THE TOP
fold fabric in half, with selvedge to selvedge for this layout



SIZE 26

SIZE 24

SIZE 22

SIZE 20

SIZE 18

SIZE 16

SIZE 14

SIZE 12

SIZE 10

SIZE 8

SIZE 6

5

Hot Patterns

free download exclusively for

fabric.com

gypsophelia peasant top

side front

cut 1 pair in fabric

SIZE 6

SIZE 8

SIZE 10

SIZE 12

SIZE 14

SIZE 16

SIZE 18

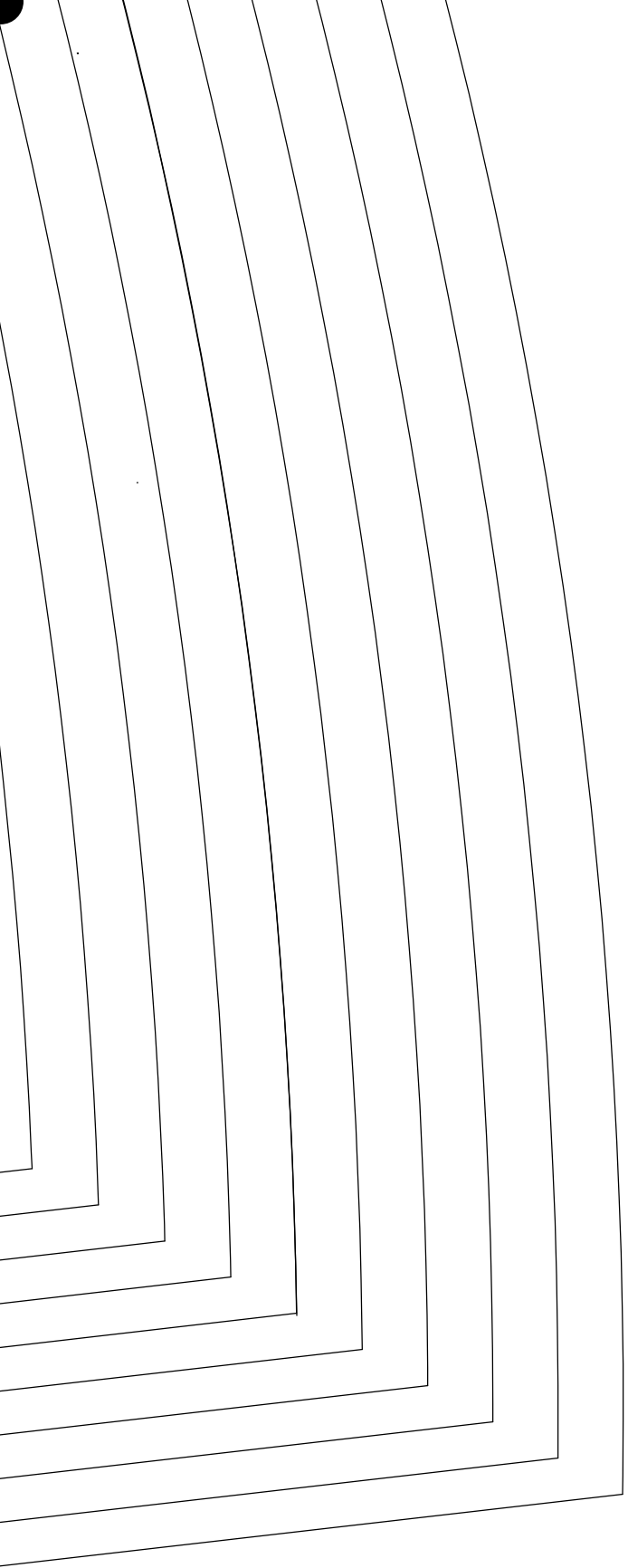
SIZE 20

SIZE 22

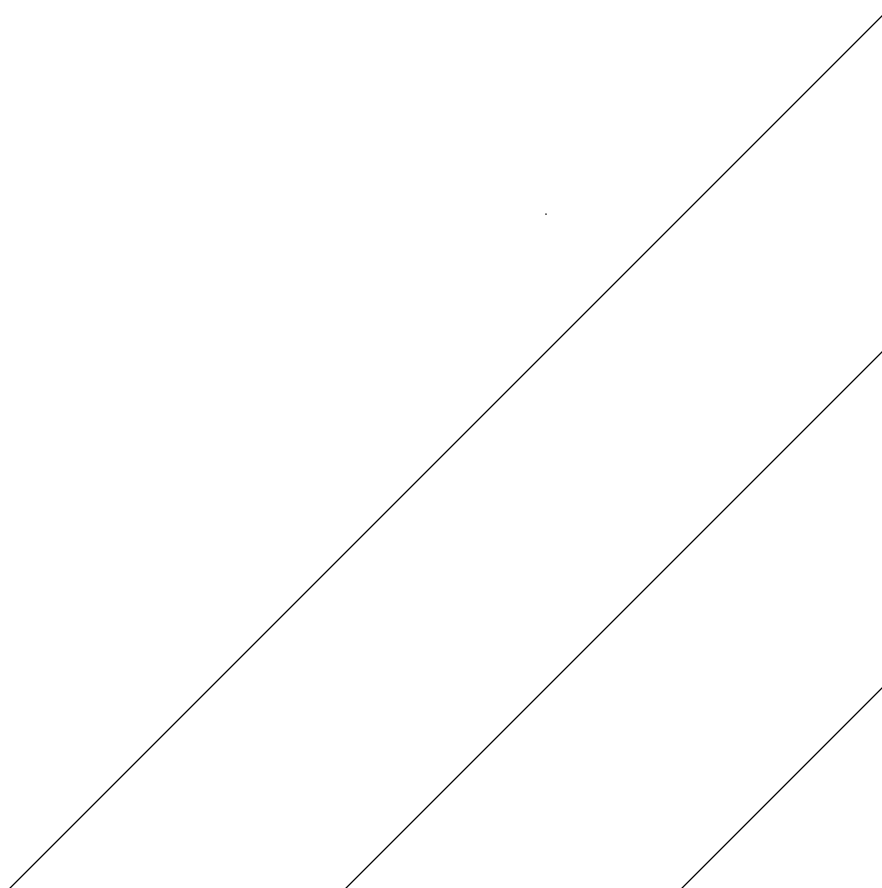
SIZE 24

SIZE 26

15

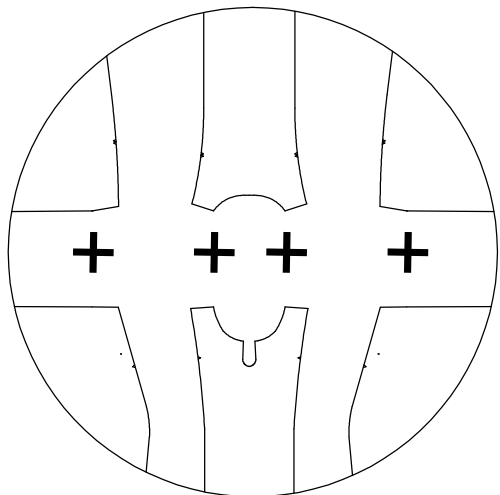


20

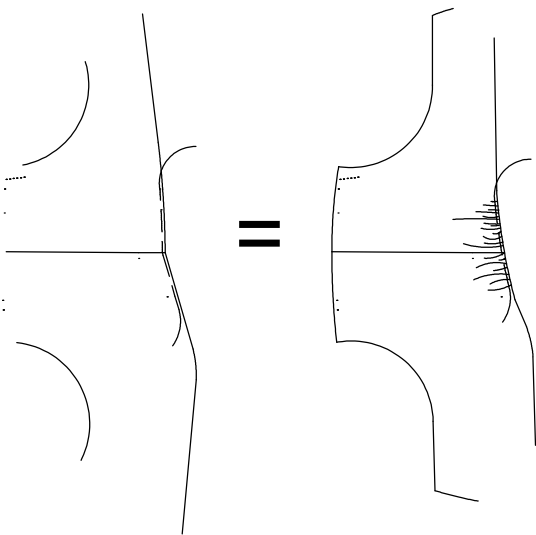


2a Join the center front to the center back along the shoulder seams, then join the side fronts to the side backs along the shoulder seams.

Press all these seams open.

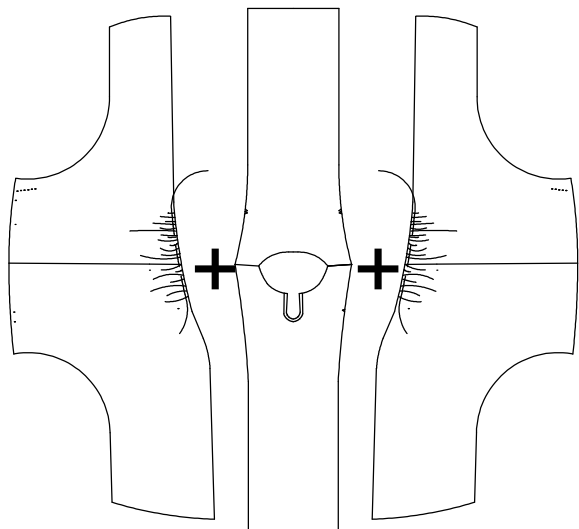


2b Work a row of gathering stitches along the front & back princess seams, from notch to notch, then draw up the gathering stitches.



Matching the notches and the shoulder seams, join the side front/back to the center front/back along the princess seams.

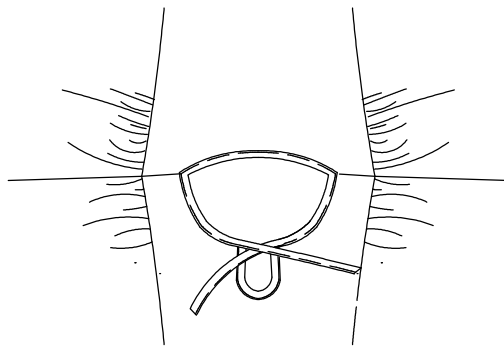
2c Press the seam allowances open, then towards the sleeve hem.



3

Complete the neckline with the medium length binding strips: join both pieces together and attach to the neckline, repeating steps 1b & 1c.

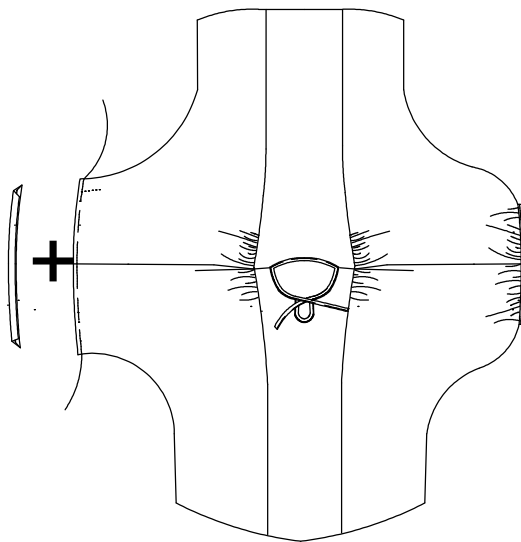
DO NOT cut off the excess binding, simply continue stitching along the binding from the neckline to create the neck ties.



4a

Measure your arm circumference, just above your elbow, then add 2" or 5cm. Gather up the sleeve ends to this measurement, repeating step 2b.

Using the remaining pieces of binding, bind these gathered edges, repeating steps 1b & 1c.



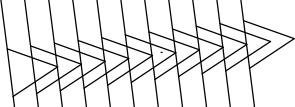
4b

Join the front to the back along the side seams, and press the seams open. To complete the top, work a 3/8" or 1cm deep hem along the bottom edge, and press flat.

Now try on your gorgeous new peasant top
don't you look fabulous?

SIZE 26
SIZE 24
SIZE 22
SIZE 20
SIZE 18
SIZE 16
SIZE 14
SIZE 12
SIZE 10
SIZE 8
SIZE 6

SIZE 26
SIZE 24
SIZE 22
SIZE 20
SIZE 18
SIZE 16
SIZE 14
SIZE 12
SIZE 10
SIZE 8
SIZE 6



Hot Patterns

free download exclusively for

fabric.com

gypsophelia peasant top
center front
cut 1 on fold in fabric

11

SIZE 26
SIZE 24
SIZE 22
SIZE 20
SIZE 18
SIZE 16
SIZE 14
SIZE 12
SIZE 10
SIZE 8
SIZE 6

FOLD

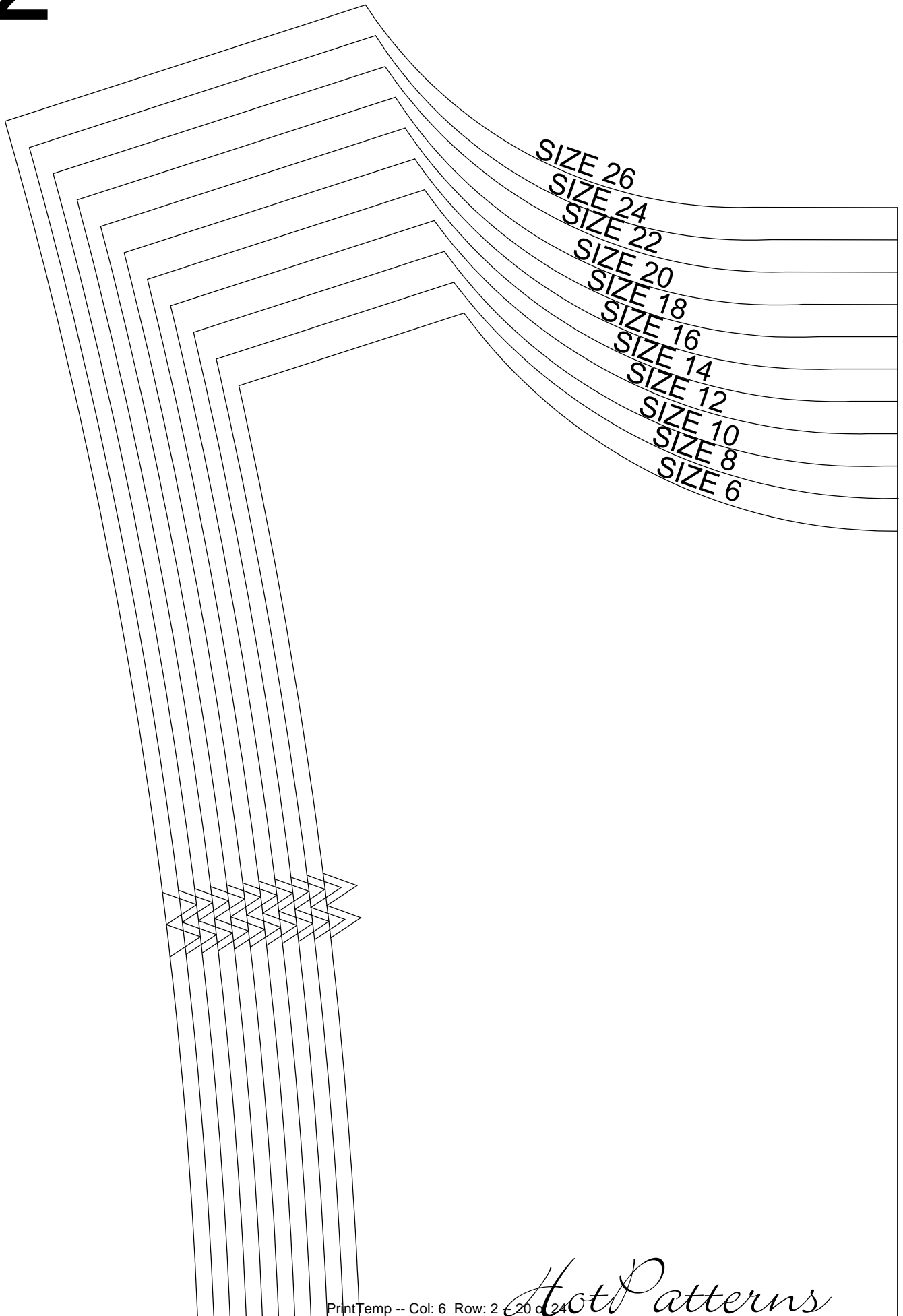
16

	SIZE 6
	SIZE 8
	SIZE 10
	SIZE 12
	SIZE 14
	SIZE 16
	SIZE 18
	SIZE 20
	SIZE 22
	SIZE 24
	SIZE 26

Hot Patterns
free download exclusively for
fabric.com
gypsophelia peasant top
neckline and sleeve binding
cut 1 in fabric

21

2



SIZE 26
SIZE 24
SIZE 22
SIZE 20
SIZE 18
SIZE 16
SIZE 14
SIZE 12
SIZE 10
SIZE 8
SIZE 6

7

free download exclusively for

fabric.com

gypsophelia peasant top

center back

cut 1 on fold in fabric

SIZE 26
SIZE 24
SIZE 22
SIZE 20
SIZE 18
SIZE 16
SIZE 14
SIZE 12
SIZE 10
SIZE 8
SIZE 6

FOLD

12

- SIZE 6
- SIZE 8
- SIZE 10
- SIZE 12
- SIZE 14
- SIZE 16
- SIZE 18
- SIZE 20
- SIZE 22
- SIZE 24
- SIZE 26

