

SKILL LEVEL



BEGINNER

multisized
pattern...sizes
6/8/10/12/14/16
/18/20/22/24/26
all together!

www.hotpatterns.comtm
patterns so hot they're smokin'...

HotPattern & fabric.com exclusive download
Voodoo Chile Gored Skirt



Cast your own spell this Hallowe'en with this pretty but edgy skirt; this one needs a fluid knit fabric, like rayon, modal or bamboo knit. You'll also need an additional matching or contrast color stretchy knit with a good recovery for the waistband. Pull-on, raw edged, gently flared 8-gore skirt features asymmetric panels, a fold-over waistband, cascading ruffles, and finishes just below the knee with a 'ragged' hem. Wear this easy-peasy skirt with a simple slim-fit top or T-shirt and flat knee-high boots or pumps for a chic & fabulous look at Hallowe'en ...and the rest of the year too...

Hot Patterns & fabric.com

exclusive free download voodoo chile skirt instructions page 1 of 1

SEAM ALLOWANCES & OTHER INFO

Seam allowances are 5/8" or 1.5 cm wide; all seams are sewn right sides together unless otherwise stated.

The waist is finished with a deep folded-over knit waistband; the bottom edges of the skirt panels & ruffles are left raw.

Skills needed include: seaming panels together; inserting ruffles; making & applying a doubled knit panel.

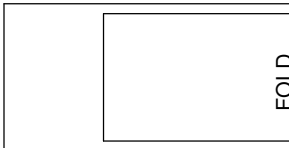
ABOUT THIS STYLE

This skirt is an eight-gore pull-on style with a fit & flare silhouette, inserted ruffles and an asymmetric hemline.

As always, make & fit a muslin before you cut into your fabric...in this case, use a cheap fabric with a similar drape to your chosen fabric.

SUGGESTED CUTTING LAYOUT FOR THE WAISTBAND

fold fabric in half, with selvedge to selvedge for this layout

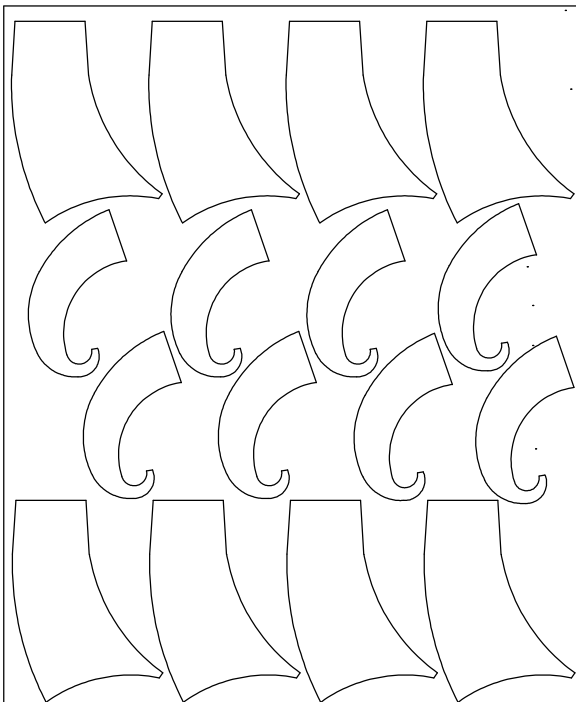


FABRIC REQUIRED

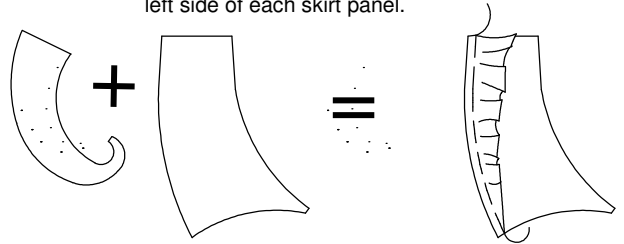
All sizes need around 2 yards/ 150 cm of fabric for this skirt, plus 1/2 yard/45cm of stretchy knit fabric. All fabric amounts are for 60" or 150cm wide fabric.

SUGGESTED CUTTING LAYOUT FOR THE SKIRT

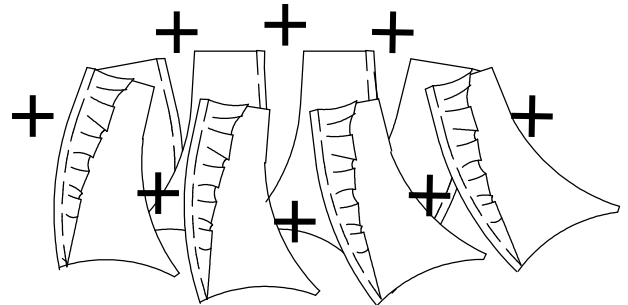
lay your fabric out flat & unfolded for this layout



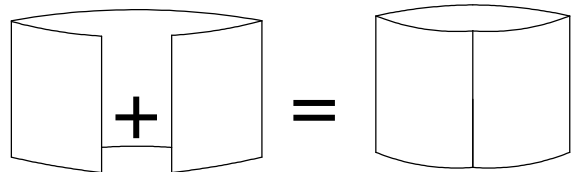
- 1 Join the ruffles to the right side of each of the eight skirt panels, making sure the ruffles end EXACTLY at the cut edges of the skirt panels. Press all the seams open, then towards the left side of each skirt panel.



- 2a Join the eight skirt panels to create the basic skirt shape, then press all the seams open.

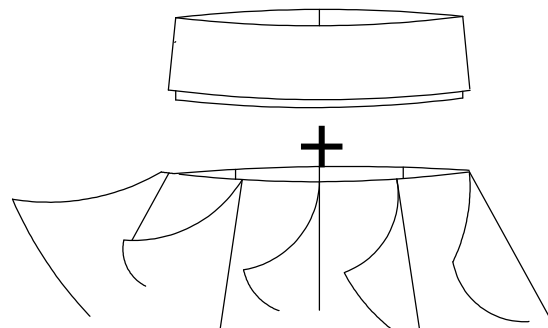


- 3a Join the short ends of the waistband piece to create a loop, and press this seam open.



- 3b Wrong sides together, fold the waistband in half to create a double-thickness loop; matching the waistband seam to one of the panel seams on the skirt, join the bottom edge of the waistband to the top edge of the skirt, stretching the waistband to fit.

Press the seam allowances down towards the hem.



Finished, and gorgeous!

1

SIZE 26
SIZE 24
SIZE 22
SIZE 20
SIZE 18
SIZE 16
SIZE 14
SIZE 12
SIZE 10
SIZE 8
SIZE 6

SIZE 26
SIZE 24
SIZE 22
SIZE 20
SIZE 18
SIZE 16
SIZE 14
SIZE 12
SIZE 10
SIZE 8
SIZE 6

SIZE 6
SIZE 8
SIZE 10
SIZE 12

SIZE 6
SIZE 8

HIPLINE

Hot Patterns
free download exclusively for
fabric.com

voodoo chile skirt
main skirt panel
cut 8 panels
RIGHT SIDE UP

2

2017
2018
2019
2020
2021
2022
2023
2024
2025
2026
2027
2028
2029
2030
2031
2032
2033
2034
2035
2036
2037
2038
2039
2040
2041
2042
2043
2044
2045
2046
2047
2048
2049
2050
2051
2052
2053
2054
2055
2056
2057
2058
2059
2060
2061
2062
2063
2064
2065
2066
2067
2068
2069
2070
2071
2072
2073
2074
2075
2076
2077
2078
2079
2080
2081
2082
2083
2084
2085
2086
2087
2088
2089
2090
2091
2092
2093
2094
2095
2096
2097
2098
2099
2100

3

SIZE 26

SIZE 24

SIZE 22

SIZE 20

SIZE 18

SIZE 16

SIZE 14

SIZE 12

SIZE 10

SIZE 8

SIZE 6

STRETCH DIRECTION _____

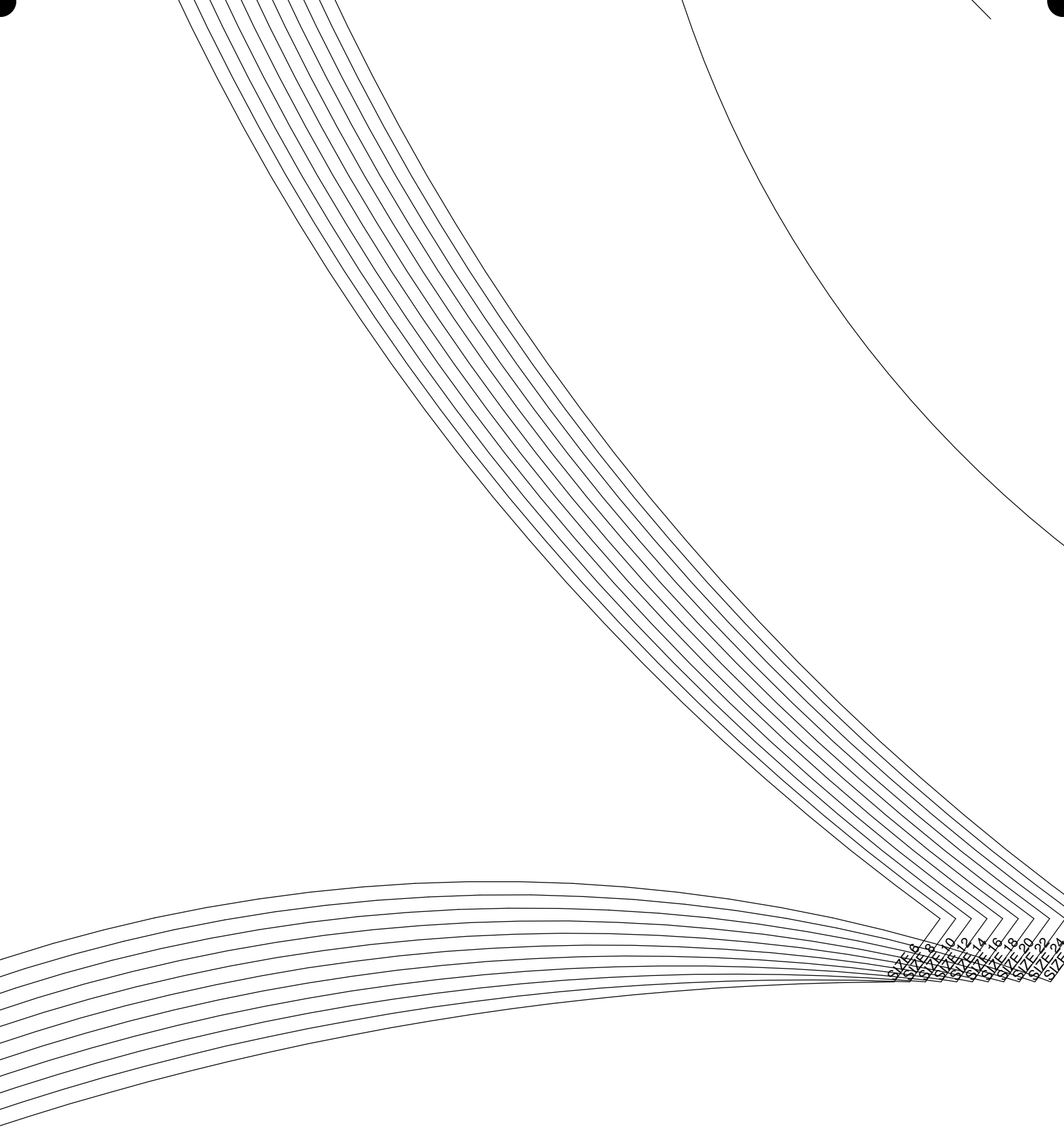
5

SIZE 10
SIZE 12
SIZE 14
SIZE 16
SIZE 18
SIZE 20
SIZE 22
SIZE 24
SIZE 26

SIZE 14
SIZE 16
SIZE 18
SIZE 20
SIZE 22
SIZE 24
SIZE 26

Hot Patterns
free download exclusively for
fabric.com

voodoo chile skirt
ruffle inserts
cut 8 ruffles
RIGHT SIDE UP



Hot Patterns

free download exclusively for

fabric.com

voodoo chile skirt

waistband panel

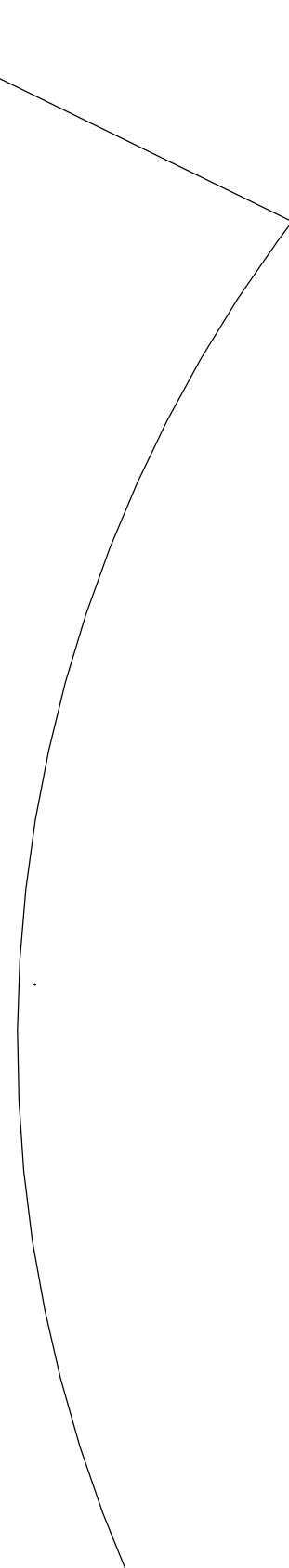
cut 1 on fold

in stretchy knit

FOLD

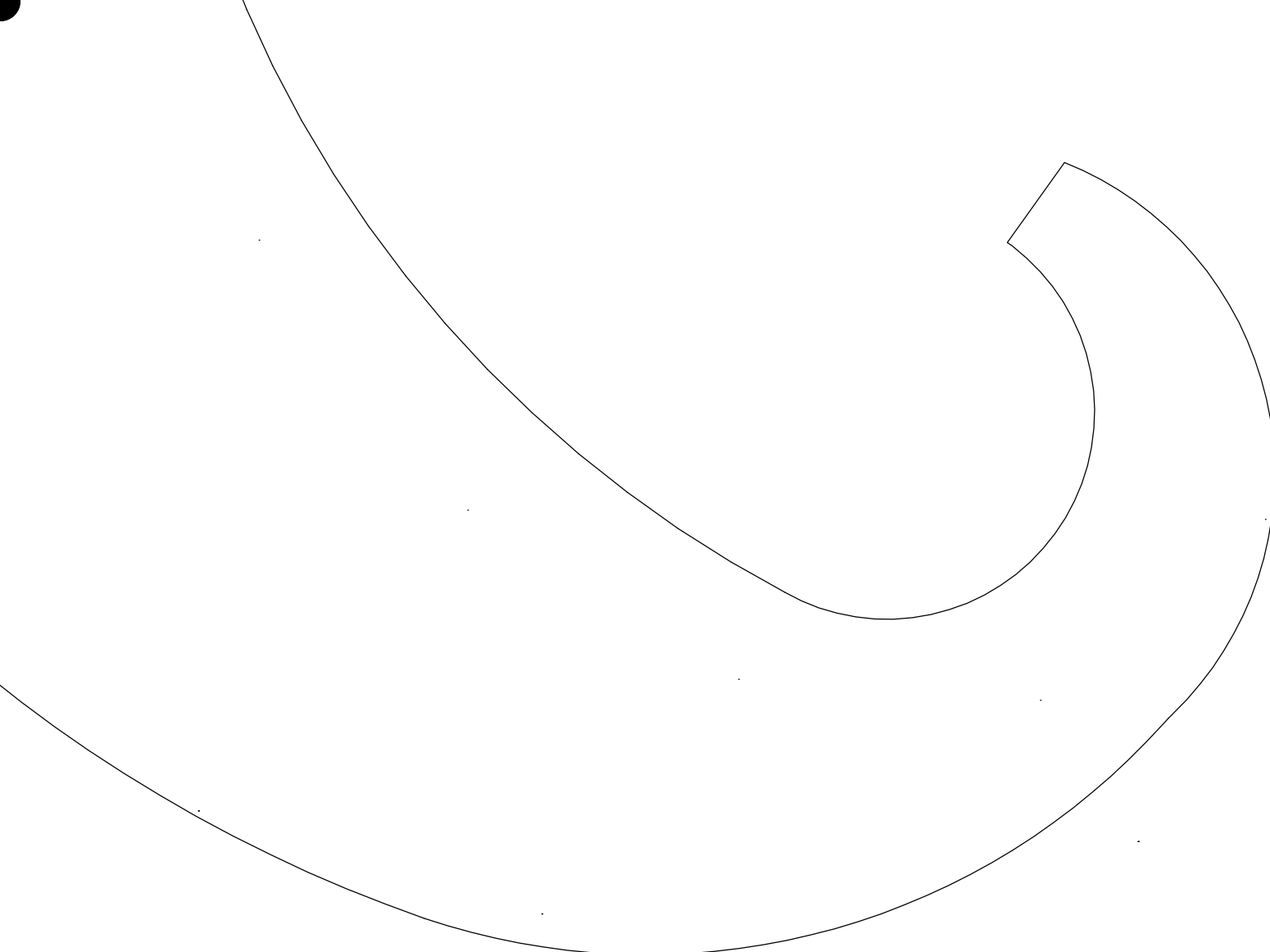
9

or
m



1	5	9
2	6	10

The table contains several graphical elements: a grid of horizontal lines in the top-right cell, a large curved shape in the bottom-right cell, and a series of parallel curved lines in the bottom-left and bottom-middle cells.



10